



**KANOMAX**  
The Ultimate Measurements

## ROTATING VANE ANEMOMETER ANEMOMASTER™ 6820 SERIES

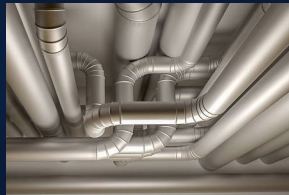
### Extremely high accuracy airflow velocity readings

The Anemomaster™ Rotating Vane 6820 Series of anemometers offers a range of highly accurate airflow measuring devices. Models include industrial grade enclosure and probe. They automatically calculate volume flow in CFM (cubic feet per minute) or CMH (cubic meters per hour). When measuring ducts dimensions are stored in memory on turn-off and do not need to be re-entered. These vane anemometers can store up to 10 different commonly-used duct sizes for quick, convenient readings in the field. Models also available for airflow/temperature and airflow/temperature/humidity.



### Applications

- ◆ HVAC Testing
- ◆ Laboratory Control
- ◆ Critical Environment Certification
- ◆ IAQ Investigations



## FEATURES AND BENEFITS

- ◆ High Accuracy: +/- 1.0 % of reading.
- ◆ 40 fpm of air velocity sensitivity.
- ◆ Temp. measurements from -22 to 212F.
- ◆ Three output options available:
  - Analog voltage
  - USB
  - RS232
- ◆ Rugged metal probe and vane.
- ◆ This is a high quality instrument which provides accurate air velocity and volume flow measurements in the harshest environments.
- ◆ The user can easily enter the size of the duct opening and the 6822 automatically calculates the volume flow rate from the duct.
- ◆ The duct size is automatically stored in memory on turn-off and up to 10 unique duct sizes can be stored and recalled for frequent use.



# PRODUCT SPECIFICATIONS

FEATURE		VALUE		
Model		6822	6824	6825
Air Velocity	Probe AP275	40 to 3900 FPM (0.2 to 20 m/s)		
	Probe AP100	300 to 6800 FPM (1.5 to 35 m/s)		
	Accuracy	± 1.0% of Reading ± 1 digit		
	Resolution	1 FPM or 0.01 m/s		
Temperature	Air Vel. Probe	-	-22 to 212°F (-30 to 100°C)	
	Optional Temp. Probe	-	-139 to 392°F (-95 to 200°C)	
	Accuracy	-	± (0.3°C+ 0.2% of Reading in °C)	
	Resolution	-	0.1 F or 0.1°C (1 F below -99.9°F)	
Relative Humidity	Range	-	5.0 to 95.0 %RH	
	Accuracy	-	±2.0 %RH	
	Resolution	-	0.1 %RH	
Display		0.5 inch LCD, 4 digits with LED Backlight		
Operating Temperature		Instrument: 32 to 125°F (0 to 50°C)		
		Probe: -4 to 212°F (-20 to 100°C)		
Power Supply		3 AA Alkaline Batteries		
Operating Time (Battery)		Approximately 150 hours		
Dimensions	Instrument	W 3.2 x D 1.5 x H 6.5 inches (8.2 x 3.8 x 16.5 cm)		
	Probe AP275	2.75 inch diameter		
	Probe AP100	1.00 inch diameter		
	RH/Temp Probe	-	6 inch x 1 inch diameter	
Standard Accessories		<ul style="list-style-type: none"> <li>• 1 x Rotating Vane Probe Head, your choice of AP275 or AP100</li> <li>• HTP 201 combination RH / Temp Probe (available for 6825)</li> <li>• Extension Rod w/ Handle Grip, Flexible Rod</li> <li>• 3 x AA 1.5V Alkaline Batteries, Operation Manual, Carrying Case</li> </ul>		
Optional Accessories		<ul style="list-style-type: none"> <li>• Protective Rubber Boot and Splash-Proof Seal</li> <li>• USB Communications</li> <li>• RS232 Communications</li> <li>• Analog Oto 5 Volt output</li> <li>• Additional Probe AP100 or AP275</li> <li>• Extra extension and/or flexible Rods</li> <li>• Custom Cable Lengths</li> <li>• Immersion RTD Temperature Probe (available for 6822 and 6825)</li> <li>• Surface RTD Temperature Probe (available for 6822 and 6825)</li> <li>• Air RTD Temperture Probe (available for 6822 and 6825)</li> </ul>		

**KANOMAX USA, INC.**  
 219 US HWY 206  
 ANDOVER, NJ 07821 USA  
 TEL: 973-786-6386  
 FAX: 973-786-7586  
 E-MAIL: SALES@KANOMAX-USA.COM  
 URL: WWW.KANOMAX-USA.COM

**DISTRIBUTED BY:**

